

anti- IDE antibody

Product Information

Catalog No.:	FNab10204
Size:	100µg
Form:	liquid
Purification:	Immunogen affinity purified
Purity:	≥95% as determined by SDS-PAGE
Host:	Rabbit
Clonality:	polyclonal
Clone ID:	None
IsoType:	IgG
Storage:	PBS with 0.02% sodium azide and 50% glycerol pH 7.3, -20°C for 12 months (Avoid repeated freeze / thaw cycles.)

Background

None

Immunogen information

Immunogen:	Insulin-degrading enzyme
Synonyms:	Abeta degrading protease, IDE, insulin degrading enzyme, Insulin protease, Insulinase, INSULYSIN
Observed MW:	54 kDa, 117 kDa
Uniprot ID :	P14735

Application

Reactivity:	Human, Mouse, Rat
Tested Application:	ELISA, WB, IHC
Recommended dilution:	WB: 1:200-1:2000; IHC: 1:50-1:200
Image:	

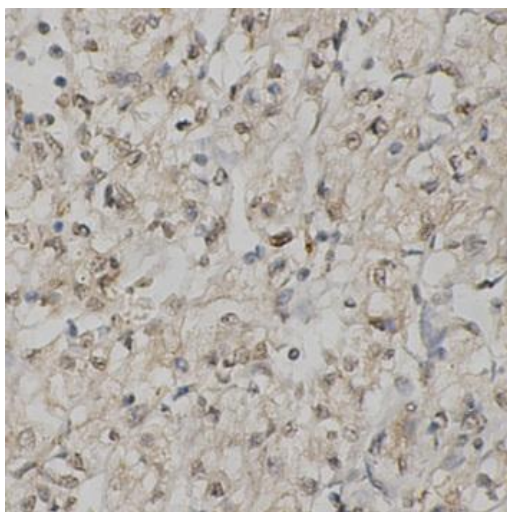
Wuhan Fine Biotech Co., Ltd.

B9 Bld, High-Tech Medical Devices Park, No. 818 Gaoxin Ave. East Lake High-Tech Development Zone. Wuhan, Hubei, China(430206)

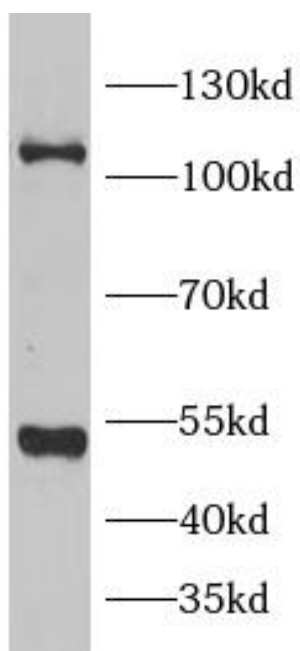
Tel : (0086)027-87384275

Fax: (0086)027-87800889

www.fn-test.com



Immunohistochemistry of paraffin-embedded human kidney cancer tissue slide using FNab10204(IDE antibody) at dilution of 1:200



HepG2 cells were subjected to SDS PAGE followed by western blot with FNab10204(IDE antibody) at dilution of 1:1000